

HAPPY NEW YORK

STEPHANE HUCHARD

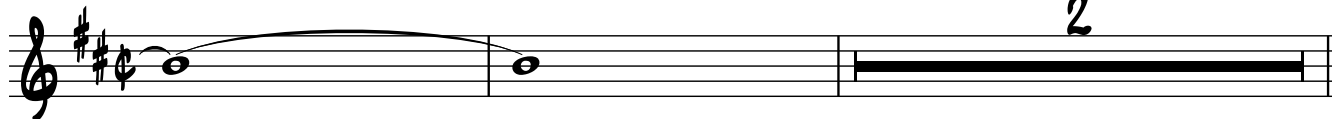
Tenor Sax

$\text{♩} = 100$

A



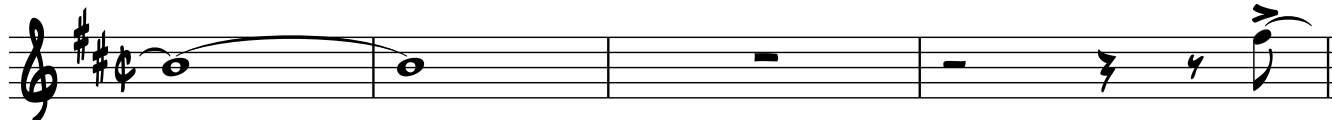
4



8



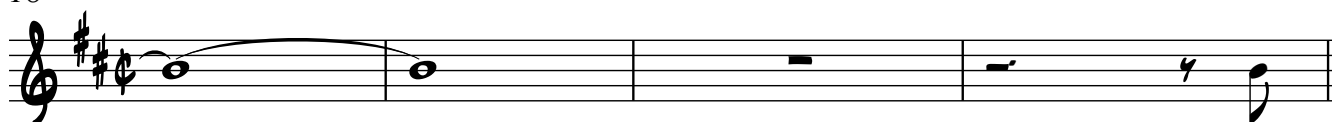
11



15

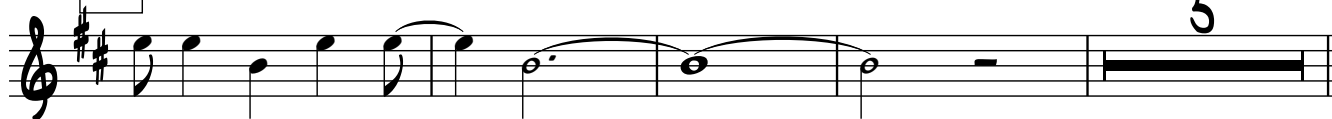


18



22

B



31

C

E-7

A¹¹

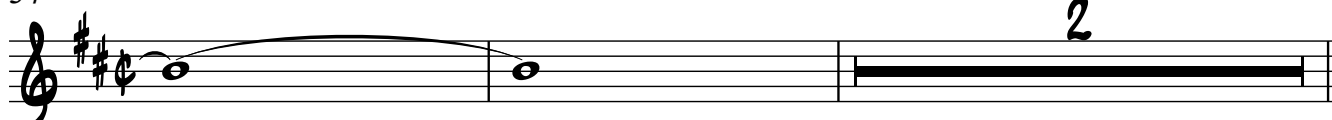
B-7

D^Δ

G^{Δ9}



34



Tenor Sax

2 38 E-7 A11 B-7 DΔ GΔ9

41

45 **D** E/G# Aadd9 F#/A# B-79

48 F#-7 C#-7 EΔ6 G-7 A LyD

51 F#-79 B11

55 C#-79 E-7 GΔ9 A11 B11

58 **E** sax SOLO B711+ 8

66 B-79 Bb/B B-79 C/B

74 F9b/B B11

81 B-79 DRUMS FILL 4

HAPPY NEW YORK
Tenor Sax

90

F piano solo

3X 3

Musical staff for measure 90 in treble clef with a key signature of two sharps (F# and C#). The staff contains a sequence of chords: E-7, B-7⁹, D-7, and G^Δ. The first four notes are followed by three measures of rests, each marked with a double slash (/).

97

G

go to F

Musical staff for measure 97 in treble clef with a key signature of two sharps. The staff contains a sequence of chords: E/G#, A^Δ, F#7/A#, and B-7⁹. The first four notes are followed by eight measures of rests, each marked with a double slash (/). A bracket above the staff spans from the first note to the eighth rest, with the number '8' centered above it.

H

ON CUE

Musical staff for measure H in treble clef with a key signature of two sharps. The staff contains a sequence of chords: F#-7, C#-7, E^Δ6, G-7, and A LyD. The first five notes are followed by a triplet of notes, indicated by a '3' above the staff.

Musical staff for measure H continuation in treble clef with a key signature of two sharps. The staff contains a sequence of chords: F#-7⁹, B¹¹, C#-7⁹, E-7, G^Δ9, and A¹¹. The first six notes are followed by a triplet of notes, indicated by a '3' above the staff.

Musical staff for measure H continuation in treble clef with a key signature of two sharps. The staff contains a sequence of chords: B¹¹, G^Δ9, and A¹¹. The first three notes are followed by a triplet of notes, indicated by a '3' above the staff. A double bar line is present, followed by a rest and then a triplet of notes, indicated by a '3' above the staff. A section symbol (S) is placed above the staff.

I

I

Musical staff for measure I in treble clef with a key signature of two sharps. The staff contains a sequence of chords: F#-7⁹, B¹¹, C#-7⁹, E-7, G^Δ9, and A¹¹. The first six notes are followed by a triplet of notes, indicated by a '3' above the staff.

Musical staff for measure I continuation in treble clef with a key signature of two sharps. The staff contains a sequence of chords: B¹¹, G^Δ9, and A¹¹. The first three notes are followed by a triplet of notes, indicated by a '3' above the staff.

on cue
rall.

Musical staff for measure I continuation in treble clef with a key signature of two sharps. The staff contains a sequence of chords: G^Δ9, A¹¹, and B¹¹. The first three notes are followed by a triplet of notes, indicated by a '3' above the staff.